

GALGUS Switch G-SW-4P2S

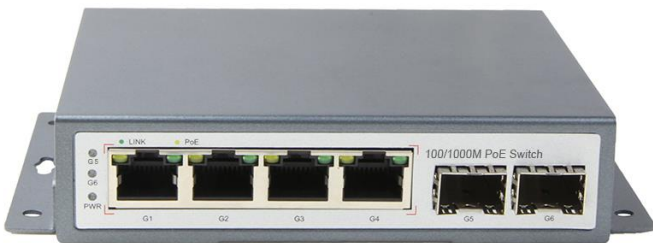
6-Port Full Gigabit PoE Fiber Switch

The G-SW-4P2S series is a full gigabit PoE fiber switch. It has 4*10/100/1000M RJ45 ports and 2*1000M SFP slot ports. Port 1-4 can support IEEE 802.3af/at standard PoE power supply. single port PoE power reaches 30W, and the maximum PoE output power is 65W (at-110W).

As a PoE power supply device, it can automatically detect and recognize the power receiving equipment that meets the standard and supply power through the network cable.

It can supply power to POE terminal equipment such as wireless AP, webcam, VoIP, visual intelligent building intercom through network cable, and meet the network environment that needs high-density PoE power supply. It is suitable for hotel, campus, park, attraction, supermarket, factory quarter and small and medium-sized enterprises to form a cost-effective network.

Unmanaged model plug and play, no configuration, easy to use.



Main Features

Full gigabit access, gigabit SFP port uplink

All series supports "gigabit Ethernet port and gigabit SFP fiber port " combination, which enables users to flexibly build networking to meet the needs of various scenarios.

Support non-blocking wire speed forwarding .

Support full duplex based on IEEE802.3x and half duplex based on backpressure .

Intelligent PoE power supply

4*10/100/1000Base-T RJ45 ports support PoE power supply to meet the needs of PoE power

supply in security monitoring, teleconferencing systems, and wireless coverage.

Conforms to the IEEE 802.3af/at PoE power supply standard, automatically recognizes PoE devices for power supply, without damaging non-POE devices. The maximum POE output power of the entire device reaches 65W(at-110W), and the maximum POE output power of a single port is 30 W.

The PoE port supports the priority mechanism. When the remaining power is insufficient, the power supply of the high-priority port is preferentially guaranteed to prevent the device from being overloaded.

The equipment is stable and reliable

The host has low power consumption, no fan, galvanized steel metal shell, excellent heat dissipation, and ensure stable operation of products.

The equipment fully meets the requirements of CCC; CE, FCC and RoHS safety regulations, and is safe and reliable.

GALGUS self-developed power supply, high redundancy design, provides long-term stable PoE power output.

Easy to operate

Plug and play, no configuration, simple and convenient.

The user can easily understand the working status of the device through the power indicator (PWR), port status indicator (Link), and PoE operation indicator.

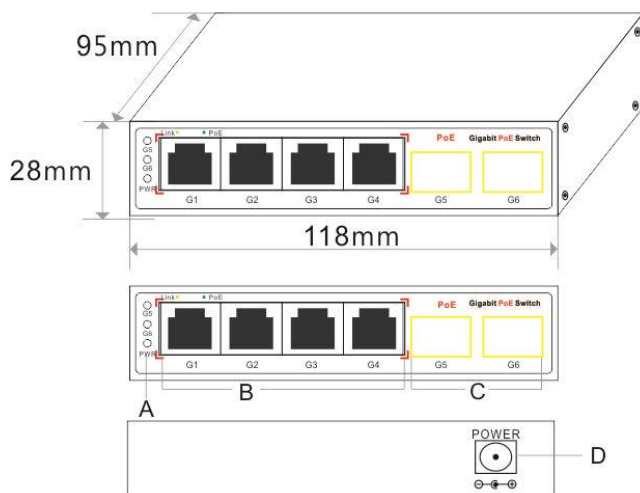
Technical Specification

Model	G-SW-4P2S	G-SW-4P2S-at
Interface	4*10/100/1000Base-T PoE ports (Data /Power) 2*1000Base-X uplink SFP slot ports (Data)	
POE Port	Port1-4 can support POE @ IEEE802.3af/at IEEE802.3 10BASE-T; IEEE802.3i 10Base-T; IEEE802.3u 100Base-TX	
Network Protocol	IEEE802.3ab 1000Base-T IEEE802.3z 1000Base-X IEEE802.3x	

PoE Standard	IEEE802.3af/at international standard	
Ethernet Port Feature	Port 1-4 can support 10/100/1000Base-T,auto-sensing, full/half duplex MDI/MDI-X	
Fiber Port Feature	Gigabit SFP optical fiber interface, default matching optical modules, need to buy separately, (Optional single-mode / multi-mode, single fiber / dual fiber module, LC).	
Forwarding Mode	Store and Forward (Full wire speed)	
Switching Capacity	12Gbps (Non-blocking)	
Forwarding Rate@64byte	8.93Mpps	
MAC	2K	
Buffer Memory	2M	
Twisted Pair Transmission	10BASE-T: Cat3,4,5 UTP(≤100 meter)	
	100BASE-TX: Cat5 or later UTP(≤100 meter)	
	1000BASE-T: Cat5e or later UTP(≤100 meter)	
Optical Fiber cable	Multi-mode:850nm 0~550M.Single-mode :1310nm 0~40KM,1550nm 0~120KM.	
Power Supply Pin	Default: 1/2(+),3/6(-);optional:4/5 (+), 7/8 (-)	
Max /Average Power Per Port	30W/15.4W	30W/30W
Total PWR / Input Voltage	65W (DC52V)	110W (DC52V)
Power Consumption	Standby<5W;Full load<65W	Standby<6W;Full load<110W
LED indicator	Power indicator: PWR (green); network indicator : Link (yellow); PoE indicator PoE (green);	
Power Supply	External power adapter, AC100~240V 50-60Hz 1A	External power adapter, AC100~240V 50-60Hz 2A
Operation TEMP / Humidity	-20~+55°C;5%~90% RH Non condensing	
Storage TEMP / Humidity	-40~+75°C;5%~95% RH Non condensing	
Dimension (L*W*H)	118*95*28mm	

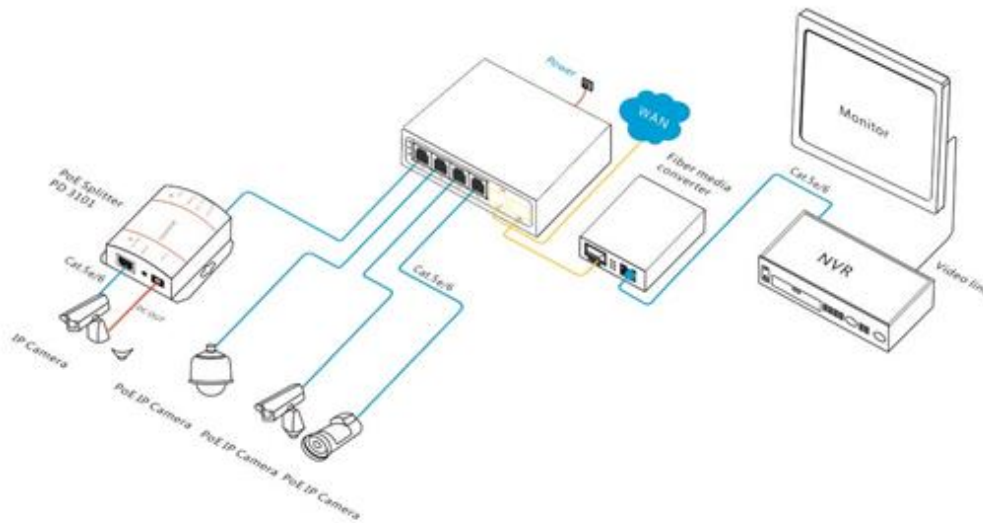
Net /Gross Weight	<0.35kg / <1.0kg
Installation Method	desktop type; wall mounting
Lightning protection / protection level	Port Lightning Protection 4KV 8/20us; Protection Level: IP30
Certification	CCC; CE mark, commercial ;CE/LVD EN60950;FCC Part 15 Class B; RoHS
Warranty	3 years, lifetime maintenance

Dimension



- A. Power indicator
- B. 4*10/100/1000M PoE ports
- C. 2*1000M uplink SFP ports
- D. DC power port

Application



Packing List

	CONTENT	QTY	UNIT
PACKING LIST	6-Port full gigabit PoE fiber switch (G-SW-4P2S)	1	SET
	AC power cable+Power adapter	1	SET
	Mounting Kits (Hanging Ear)	1	SET
	User Guide	1	PC
	Warranty Card	1	PC

Note: PoE switch does not match SFP module by default. If you need to purchase it, please refer to the accessory product information.